

# IRESS PORTFOLIO SYSTEM



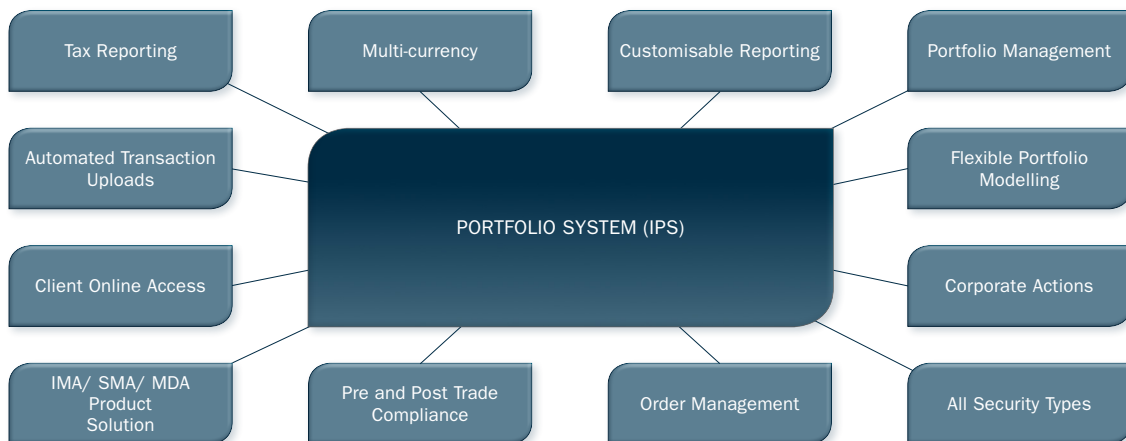
THE COMPLETE PORTFOLIO SOLUTION

CATERING TO THE CHANGING NEEDS OF THE FUNDS MANAGEMENT ENVIRONMENT, THE IRESS PORTFOLIO SYSTEM (IPS) IS A COMPREHENSIVE PORTFOLIO MANAGEMENT SOLUTION.

The subject of intense user research, development and testing, IPS is IRESS' solution to providing a fully international, multi-asset class, wholesale funds management solution. IPS continues to lead the industry with its tax-based IMA/SMA/MDA solution for the rapidly growing managed account market.

## KEY FEATURES OF IPS

- Flexible modelling with customisable benchmarks
- Pre and post deal multi-fund rebalancing and allocation. Integration with the IRESS Order System (IOS) network for STP includes order placement and allocations
- Pre and post trade compliance
- Native knowledge of live pricing
- Multi-currency securities and valuation
- Tax analysis and reporting
- Corporate actions
- Cash forecasting.



## ASSET CLASSES

IPS will support any asset type, and has innate knowledge of securities for:

- Equities
- Fixed Interest
- Options
- Futures
- Managed Funds
- Hybrids
- Forex
- Cash

**“IPS DELIVERS EXTENSIVE TOOLS FOR MODELLING, COMPLIANCE AND ORDER MANAGEMENT, WITH TAX ANALYSIS AND FULL PORTFOLIO REPORTING FEATURES.”**

## MULTI-CURRENCY

All currency permutations are supported, enabling investment managers to manage, forecast and analyse multi-currency positions and FOREX.

Foreign exchange rates update automatically. IPS converts transactions to the base currency set for the account. You can generate portfolio reports in any specified reporting currency, in addition to security native currencies.

In IPS, you can view holdings by:

- Portfolio currency
- Native security currency
- Settlement currency
- Reporting currency.

# INTERNATIONAL MULTI-ASSET CLASS FUNDS MANAGEMENT SOLUTION

## PRICING

IRESS offers a wide range of in-depth global market data. In addition to IRESS' global data, IPS tools are available to automate pricing from other sources, such as REUTERS, Bloomberg, and FIX based sources

## CUSTODIAL ENTITIES

IPS lets you register a single HIN against multiple clients, and apply corporate actions, capital and cash transactions at the custodial entity level for distribution across many portfolios.

## FEES

Calculate and invoice client fees on a Funds Under Management (FUM), per transaction, or a per lot basis. Alternatively, use your own proprietary fee calculation.

## CORPORATE ACTIONS

IPS includes a complete historical corporate action database for the ASX top 500. New corporate action templates are created daily.

You can automatically process simple corporate actions such as dividends and managed fund distributions. Automation of more complicated events is available on request.

## MODELLING, ORDER MANAGEMENT AND COMPLIANCE

### ORDER MANAGEMENT AND ALLOCATION

IPS builds on the strong, existing IOS connectivity for order flow, allocations and reporting. IPS uses FIX connectivity to non-IOS brokers, allowing domestic clients to route orders for global equities to global brokers.

Features include:

- Alternative Trading Systems (ATS)
- Direct Market Access (DMA)
- Electronic Communication Networks (ECN)
- SWIFT.

## MODELLING

Portfolio modelling is flexible, with market benchmarks that you can customise and compare in real-time.

Multiple models can be assigned to portfolios, with on-demand rebalancing and bulk order management.

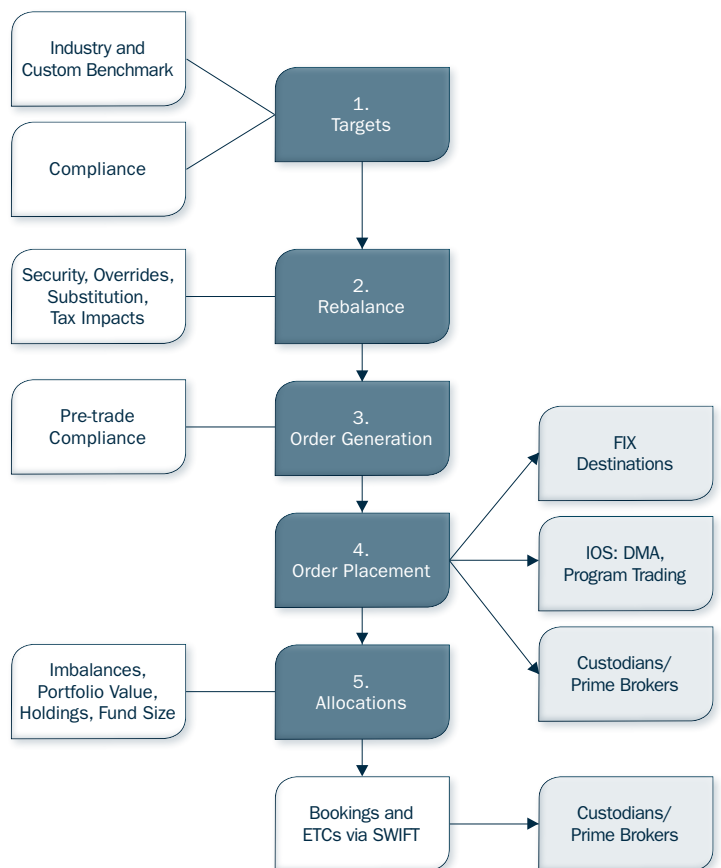
## COMPLIANCE

Comprehensive pre and post trade compliance rule sets ensure portfolios adhere to internal policies and investment mandates.

You can run compliance checks at any stage to report on breaches and warnings. An extensive audit trail records all actions carried out on the database.

## WORKFLOW

IPS uses a five-step process for configuring and populating funds.



## TAX ANALYSIS AND REPORTING

### TAX ANALYSIS

Comprehensive capital gains tax (CGT) management tools offer valuation, performance and CGT reporting of all investment types.

IPS optionally stores transactions on a parcel basis, allowing sell transactions to match against specific historical buy transactions to achieve particular CGT outcomes.

IPS includes other key tax management functionality such as portfolios for different tax entities, administration of managed accounts for either a single or multiple HIN model; and transaction matching and 'what if' scenarios.

### REPORTING

IPS provides a comprehensive, customisable suite of portfolio reports which can be generated ad hoc or for bulk reporting. Specialised derivative reports are available for clients investing in options and warrants.

## AUTOMATED DATA FEEDS

The IRESS Network (IRESSnet) is an innovation in data feed processing software. With IRESSnet, data providers deliver data faster, more efficiently, and tailored to a wider audience than ever before.

IRESSnet allows for automated data feed setup for advisers, simplified data management and improved error handling and reporting.

## CLIENT ONLINE ACCESS

IRESS Investor offers a ready-made solution to making client account information and reports available to your clients.

IRESS Investor can be re-branded and seamlessly integrated into your existing website.

## WEB SERVICES

Clients can request IPS data directly from the IPS database, with the flexibility of extracting the information in any format.

## WANT MORE INFORMATION?

If you would like to find out more about the IRESS Portfolio System (IPS), please contact us via email at [enquiries@iress.com.au](mailto:enquiries@iress.com.au), or call an office near you.

#### AUSTRALIA

Melbourne | +61 3 9018 5800  
Sydney | +61 2 8273 7000  
Brisbane | +61 7 3011 4700  
Perth | +61 8 6211 5900  
Adelaide | +61 3 9018 5800

#### ASIA

Hong Kong | +852 3965 3341  
Singapore | +65 6672 6288

#### CANADA

Toronto | +1 416 907 9200

#### NEW ZEALAND

Auckland | +64 9 300 5571  
Wellington | +64 4 462 6850

#### SOUTH AFRICA

Johannesburg | +27 11 575 0040  
Cape Town | +27 21 657 8800

Email | [enquiries@iress.com](mailto:enquiries@iress.com)

Web | [www.iress.com](http://www.iress.com)